

SENA chair

By Christophe Pillet

MATERIALES

- Tablero curvado de respaldo en madera de haya contrachapada y recubierto de poliuretano ignífugo (según normativa inglesa).
- Asiento de tablero contrachapado de haya recubierto de poliuretano ignífugo (según normativa inglesa).
- Patas de madera maciza de roble o nogal.
- Patas metálicas de aluminio lacado, con sistema de rotación de 360°.
- Tacos de plástico o de fieltro.

MATERIALS

- Curved backrest in beech plywood covered with fire retardant polyurethane (according to English standards).
- Seat in beech plywood covered with fire retardant polyurethane (according to English standards).
- Solid oak or walnut legs.
- Lacquered aluminium metal legs, with 360° rotation system.
- Plastic or felt feet.

MATÉRIAUX

- Dossier courbé en contreplaqué de hêtre recouvert de polyuréthane ignifugé (selon la réglementation anglaise).
- Siège en contreplaqué de hêtre recouvert de polyuréthane ignifugé (selon la réglementation anglaise).
- Pieds en chêne ou en noyer massif.
- Pieds métalliques en aluminium laqué, avec système de rotation à 360°.
- Patins en plastique ou en feutre.

MATERIALIEN

- Gebogene Rückenlehnenplatte aus Buchensperrholz mit feuerfestem Polyurethan beschichtet (gemäß den englischen Vorschriften).
- Sitz aus Buchensperrholz, beschichtet mit feuerfestem Polyurethan (gemäß den englischen Vorschriften).
- Beine aus massiver Eiche oder Nussbaum.
- Metallbeine aus lackiertem Aluminium, mit 360°-Drehsystem.
- Füße aus Kunststoff oder Filz.

MATERIALI

- Schienale curvo in multistrato di faggio rivestito di poliuretano ignifugo (secondo la normativa inglese).
- Sedile in multistrato di faggio rivestito in poliuretano ignifugo (secondo la normativa inglese).
- Gambe in rovere o noce massiccio.
- Gambe in metallo laccato, con sistema di rotazione a 360°.
- Piedini in plastica o in feltro.

ESPAÑOL

ENGLISH

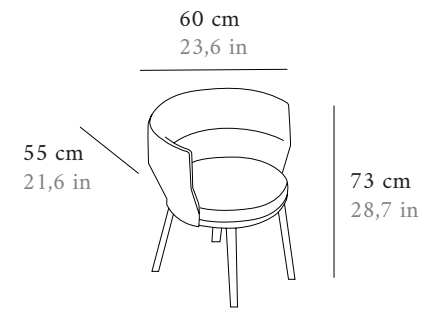
FRANÇAIS

DEUTSCH

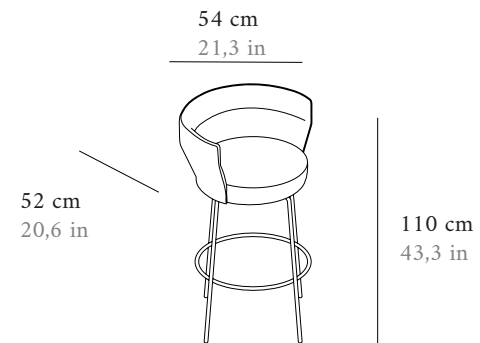
ITALIANO



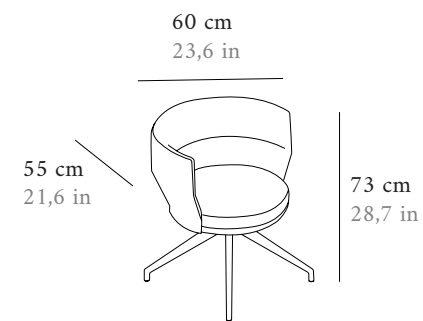
SENA
chair



SEN 101

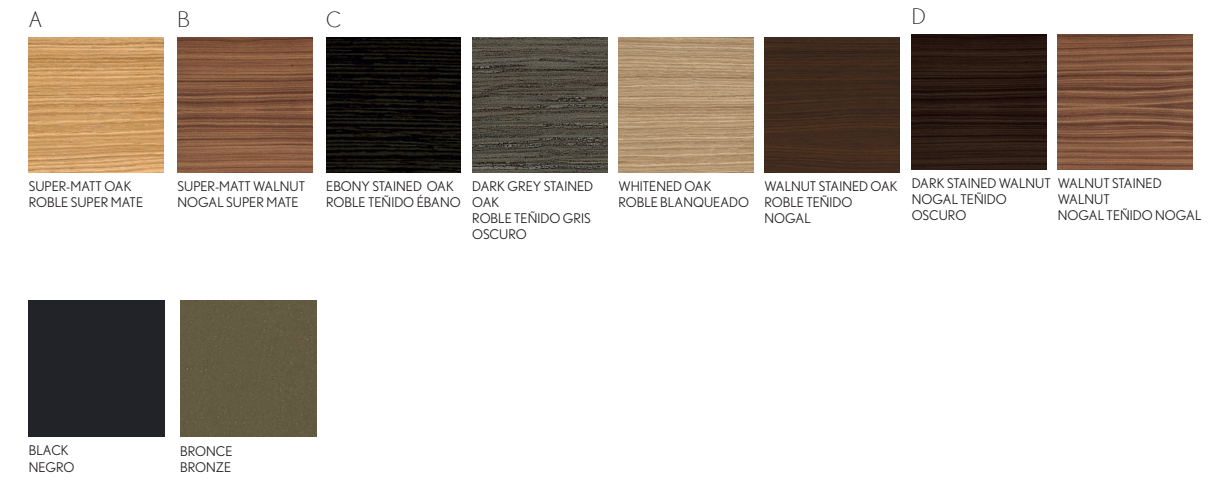


SEN 201



SEN 103

LEGS. PATAS



SEAT AND BACK, COMBINABLE. ASIENTO Y RESPALDO, COMBINABLES.

L'INTERNO - ACUATONIC

TEXTILES G2



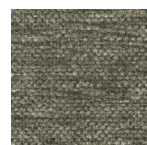
Aquatonic 101



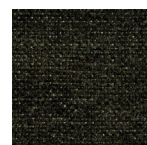
Aquatonic 201



Aquatonic 302



Aquatonic 902



Aquatonic 999

CHARACTERISTICS

Comp. 48% AC 41%PL 11%CO

CARACTERÍSTICAS

Comp. 48% AC 41%PL 11%CO

L'INTERNO - APOLLO

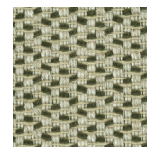
TEXTILES G2



Apollo 1



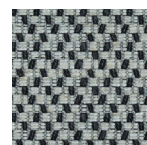
Apollo 2



Apollo 81



Apollo 9



Apollo 99

CHARACTERISTICS

Comp. 42%CO 25%VI 20%PL 13%LI

CARACTERÍSTICAS

Comp. 42%CO 25%VI 20%PL 13%LI

L'INTERNO - RUBENS

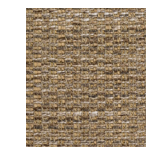
TEXTILES G2



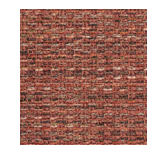
Rubens 1



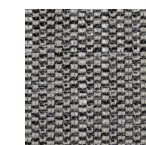
Rubens 2



Rubens 12



Rubens 7



Rubens 15

CHARACTERISTICS

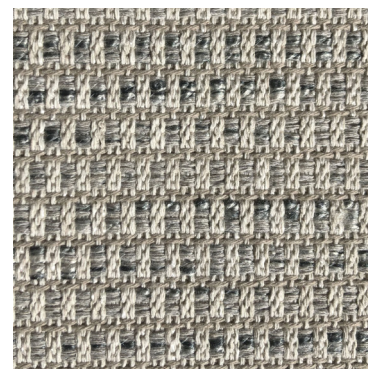
Comp. 65%AC 35%PL

CARACTERÍSTICAS

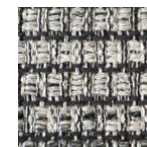
Comp. 65%AC 35%PL

MANUEL REVERT - ODDI

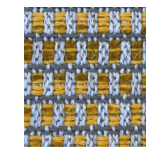
TEXTILES G2



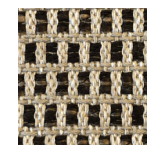
Oddi 9



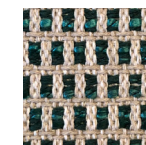
Oddi 90



Oddi 10



Oddi 55



Oddi 38

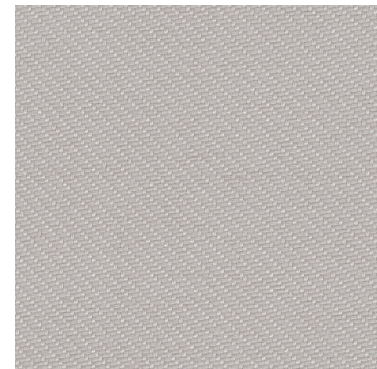
CHARACTERISTICS

Comp. 45% PES 43% CO 11% PAC 1% PA

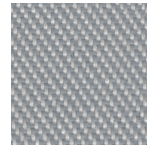
CARACTERÍSTICAS

Comp. 45% PES 43% CO 11% PAC 1% PA

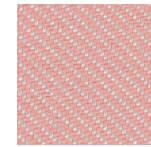
L'INTERNO - RELATE



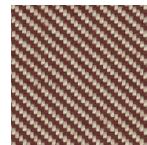
Relate 101



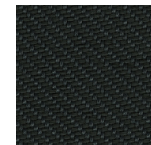
Relate 121



Relate 611



Relate 341



Relate 191

CHARACTERISTICS

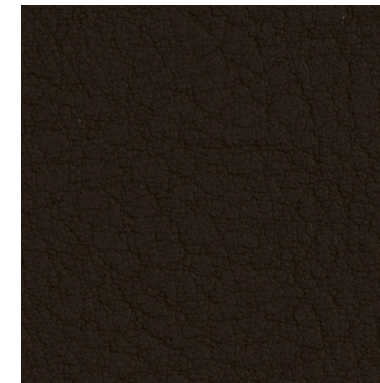
Comp. 100% Trevira CS

CARACTERÍSTICAS

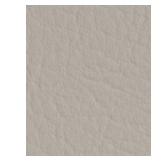
Comp. 100% Trevira CS

TEXTILES G2

SPRADLING VALENCIA



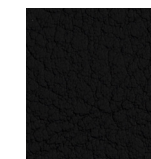
VALENCIA PRALINE 0001



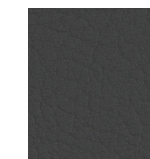
VALENCIA WEISS 8032



VALENCIA LEINEN 1049



VALENCIA SCHWARZ 9035



VALENCIA GRAPHITE 4003

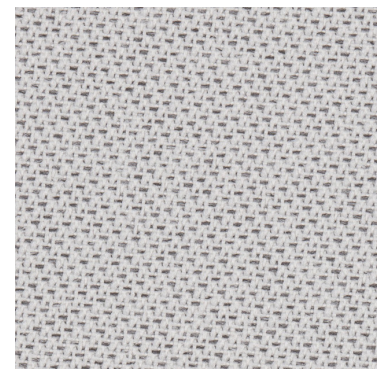
CHARACTERISTICS

Comp. Topcoat: 100% vinyl

CARACTERÍSTICAS

Comp. Capa superior: 100% vinilo

GABRIEL - TONAL



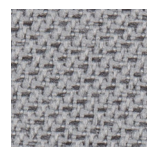
Tonal 60122



Tonal 61180



Tonal 67089



Tonal 60123



Tonal 60999

CHARACTERISTICS

Comp. 99% post-consumer recycled polyester, 1% polyester

CARACTERÍSTICAS

Comp. 99% post-consumer recycled polyester, 1% polyester

TEXTILES G2

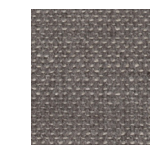
CREVIN MATIS



Matis 05



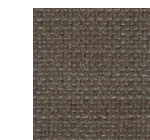
Matis 07



Matis 52



Matis 53



Matis 95

CHARACTERISTICS

Comp. 50%PES 20%CV 15%CO 10%LLI

CARACTERÍSTICAS

Comp. 50%PES 20%CV 15%CO 10%LLI

TEXTILES G2

TEXTILES G2

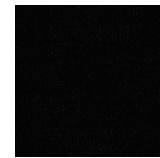
TEXTAAFOAMSSEVEN



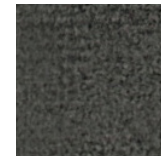
SEVEN 11



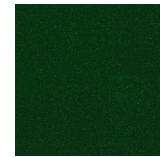
SEVEN 18



SEVEN 169



SEVEN 168



SEVEN 162

CHARACTERISTICS

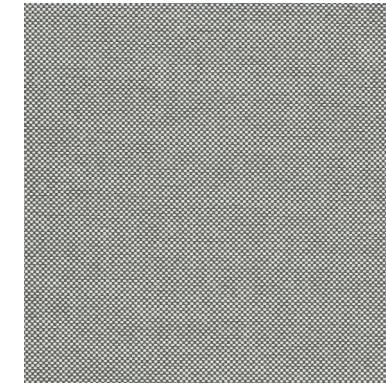
Comp. 100%PES

TEXTILES G2

CARACTERÍSTICAS

Comp. 100% PES

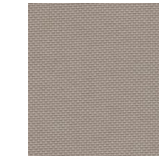
KVADRAT FIELD



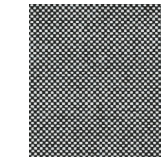
FIELD 132



FIELD 222



FIELD 233



FIELD 142



FIELD 693

CHARACTERISTICS

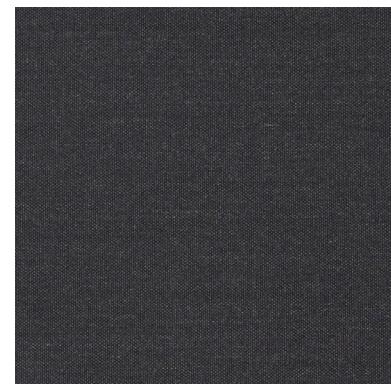
Comp. 100% Trevira CS

TEXTILES G3

CARACTERÍSTICAS

Comp. 100% Trevira CS

KVADRAT REMIX



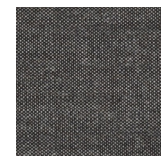
REMIK 383



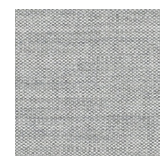
REMIK 223



REMIK 233



REMIK 152



REMIK 123

CHARACTERISTICS

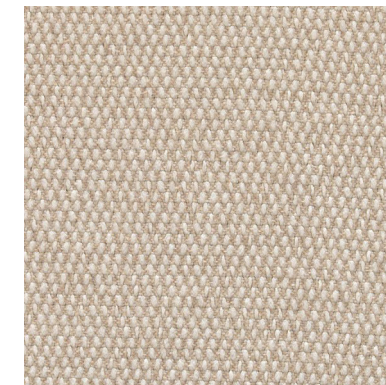
Comp. 90% new wool worsted, 10% nylon

TEXTILES G3

CARACTERÍSTICAS

Comp. 90% lana virgen, 10% nailon

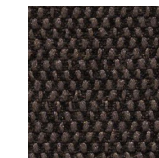
MAHARAM MESSENGER



Messenger 78



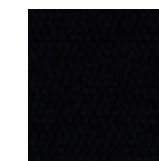
Messenger 81



Messenger 76



Messenger 08



Messenger 29

CHARACTERISTICS

Comp. 78% Recycled polyester, 15% polyester, 7% nylon

TEXTILES G3

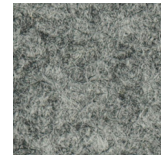
CARACTERÍSTICAS

Comp. 78% Recycled polyester, 15% polyester, 7% nylon

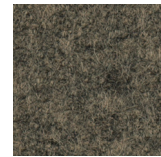
GABRIEL FOCUS MELAGNE



Focus 60309



Focus 60311



Focus 61242

CHARACTERISTICS

Comp. 100% New Zealand wool

TEXTILES G 4

CARACTERÍSTICAS

Comp. 100% New Zealand wool

KVADRAT MOSS



Moss 4



Moss 1



Moss 8

CHARACTERISTICS

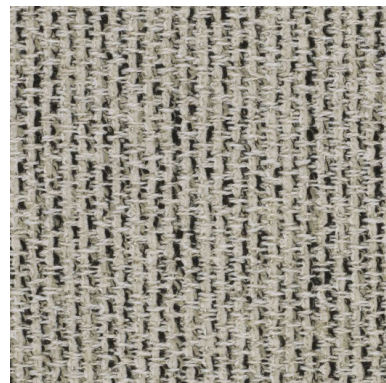
Comp. 52% cotton 22% viscose 14% polyacrylic 6% linen 3% nylon 3% polyester

TEXTILES G 5

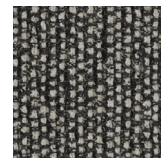
CARACTERÍSTICAS

Comp. 52% cotton 22% viscose 14% polyacrylic 6% linen 3% nylon 3% polyester

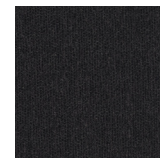
KVADRAT SAVANNA



SAVANNA 112



SAVANNA 152



SAVANNA 192



SAVANNA 202



SAVANNA 262

CHARACTERISTICS

Comp. 34% polyester, 31% new wool, 26% polyacrylic, 4% cotton, 3% nylon, 2% linen

TEXTILES G 4

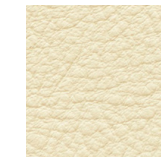
CARACTERÍSTICAS

Comp. 34% poliéster, 31% lana virgen, 26% poliacrílico, 4% algodón, 3% nailon, 2% lino

LEATHER BABEL



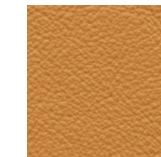
CINDER



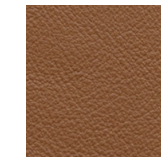
AVORIO



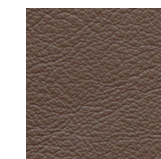
STONE



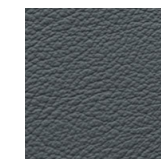
MIEL



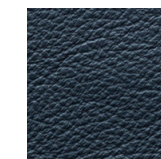
MARRONE



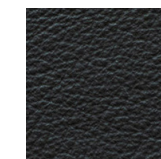
CASTAGNA



NEW GREY



NOTE



NERO

CHARACTERISTICS

Comp. Leather bovine European 0.8 - 1mm

TEXTILES G 5

CARACTERÍSTICAS

Comp. Leather bovine European 0.8 - 1mm

	COMPOSITION	DURABILITY	FIRE TEST	MAITENANCE
Aquatonic	48% AC 41%PL 11%CO	80.000 Martindale	BS 5852:0 1979 Ing Cigarette TB 117-2013	
Apollo	42%CO 25%VI 20%PL 13%LI	42.000 Martindale		
Rubens	65%AC 35%PL	27.000 Martindale		
Oddi	45% PES 43% CO 11% PAC 1% PA	25.000 Martindale	UNE-EN ISO 12945-2	
Relate	100% Trevira CS	80.000 Martindale	BS 5852 Crib 5 IMO FTP Code 2010 Part 8 NF D 60 013 NFPA 701 SN 198 898 5.2 UNI 9177 Classe 1 US Cal. Bull. 117-2013 NF P 92 507 M1 DIN 4102 B1 EN 1021-1/2 ONORM B1/Q1 ASTM E84 Class A Unadhered ASTM E84 Class B Adhered UNI 9175 11M AS/NZS 3837 class 2 EN 13501-1, B-s1, d0 BS 5867 part 2 type B BS 5852 part 1 with treatment	
Tonal	99% post-consumer recycled polyester, 1% polyester	100.000 Martindale	CA TB 117-2013 ASTM E 84 Class I BS EN 1021 1&2 Cigarette and Match BS EN 1021-1 Cigarette BS 476 Part 7 class I DIN EN 13501-1 B-s1,d0(glued)	
Valencia	100% Vinyl	300.000 Martindale	AT: ONORM A 3800 Teil 1, Qualmbildungsklasse Q1 - schwachqualmend AT: ONORM B 3825, Gruppe 1 - Schwerbrennbares Verhalten DE: DIN 4102 B2 ES: UNE 23.727-90 1R/M.2 EU: ECE Regulation No.118:03 (R118.02 Annexes 6, 7 & 8) EU: EN 1021 Parte 1 y 2 EU: EN 71-2:2006+A1:2007 - Seguridad del juguete - Parte 2: Inflamabilidad FR: NF P 92-503/M2 IMO FTP 2010 Código MSC.307 (88) Parte 8 3.1 & 3.2 IT: UNI 9175 (1987) UNI 9175/FA1 (1994) Classe 1.1M (UNO EMME) (MED) Marine Equipment Directive (en su versión en vigor) US: CAL TB 117-2013, Section E US: ASTM E 84 Adhered - Class I US: FAR 25/853 US: FMVSS 302 US: NFPA 260 - Class 1	
Matiss	50% PES, 20% CV, 15% CO, 10% LI	35.000 Martindale	EN ISO 12947/4:1998 - EN 14465:2003 BS5852 Source 0 EN 1021 Part 1 NFPA 260 CAL TB-117 EN ISO 12945/2:2000 EN ISO 105-B02:1998 EN ISO105-B02 /A01:2002	
Seven	100% PES	100.000 Martindale	EN ISO 12947 1 & 2 EN ISO 12945-2 class 4-5 EN ISO B02 EN ISO 13934-1 EN ISO 13937-3 EN ISO 13936 2 EN ISO 105 X12	

	COMPOSITION	DURABILITY	FIRE TEST	MAITENANCE
Remix	90% new wool, 10% nylon	100.000 Martindale	AS/NZS 1530.3 BS 5852 crib 5 with treatment BS 5852 part 1 IMO FTP Code 2010 Part 7 with treatment IMO FTP Code 2010 Part 8 NF D 60 013 NFPA 260 SN 198 898 5.3 with treatment UNI 9175 11M US Cal. Bull. 117-2013 EN 1021-1/2 AS/NZS 3837 class 2 ONORM B1/Q1 ASTM E84 Class A Unadhered ASTM E84 Class A Adhered GB 50222 B1 with treatment (Chinese)	
Field	100% Trevira CS	80.000 Martindale	BS 5852 Crib 5 FAR 25.853 IMO FTP Code 2010 Part 8 NF D 60 013 NF P 92 507 M1 SN 198 898 5.2 1 UNI 9175 11M UNI 9177 Classe 1 US Cal. Bull. 117-2013 DIN 4102 B1 EN 1021-1/2 NFPA 701 ASTM E84 Class A Unadhered AS/NZS 3837 class 1 ONORM B1/Q1 EN 13501-1, B-s1, d0	
Messenger	78% Recycled polyester, 15% polyester, 7% nylon	30.000 Martindale	AS/NZS 1530.3 AS/NZS 3837 Unadhered ASTM E 84 Unadhered BS 5852 Crib 5* CAL 117-2013 CAN ULC S102 Unadhered EN 1021-1* EN 1021-2* EN 13501 Unadhered* GB/T 17591* ISO 5660 Unadhered NFPA 260 UNI 9175* *passes with additional treatment	
Focus Melagne	100% New Zealand wool	100.000 Martindale	BS EN 10211&2 Cigarette and Match BS 5852 Part 1 0,1 Cigarette & match CA TB 117-2013 Class Uno UNI 9175 Class 1 EMME AM18 - NF D 60-013-(only for fabric) ONORM A3800-B1-B3825-Q1 UK	
Savanna	34% polyester 31% new wool 26% polyacrylic 4% cotton 3% nylon 2% linen	45.000 Martindale	BS 5852 crib 5 with treatment NF D 60 013 with treatment SN 198 898 5.3 with treatment UNI 9175 11M with treatment US Cal. Bull. 117-2013 EN 1021-1/2 AS/NZS 3837 class 2 BS 5852 part 1 with treatment	
Moss	52% cotton 22% viscose 14% polyacrylic 6% linen 3% nylon 3% polyester	50.000 Martindale	BS 5852 crib 5 with treatment BS 5852 part 1 EN 1021-1/2 US Cal. 117-2013 with Cal. 117 compliant interliner	
Babel*	Leather bovine European 0.8 - 1mm	50.000 Martindale	EN ISO 4045 EN ISO 3377-1 EN ISO 11640/11641 EN ISO 105-B02 EN ISO 11644 EN ISO 5402-1 BS 5852-1: 79	

*For a leather finish 4 chairs is the minimum order